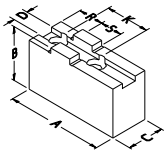
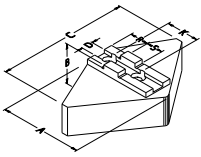


Zachte klauwen (nok/groef)



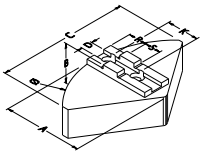
recht

TYPE	A	B	C	D	K	R	S	BOUW	KG/SET	MATERIAAL
CU16	85	40	20	8	32	25	18	M8	1.1	staal
CU161	85	55	30	8	32	19	18	M8	2.6	staal
DP16	60	40	40	8	32	17	18	M8	1.8	staal
CU163	70	60	40	8	32	19	18	M8	3.3	staal
CW16	85	51	25	8888	32	25	18	M8	0.7	aluminium



segment omkeerbaar

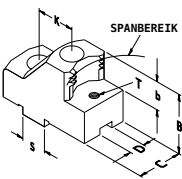
TYPE	A	B	C	D	K	R	S	BOUW	KG/SET	MATERIAAL
CQ16	60	60	120		32		18	M8	9.0	staal
HT16	62	64	120		32		18	M8	3.8	aluminium



segment

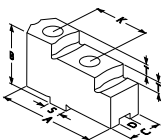
TYPE	A	B	C	D	K	R	S	BOUW	KG/SET	MATERIAAL
CF16	73	51	152Ø		32		18	M8	7.0	staal

Harde klauwen (nok/groef)



grippklauwen - buitenspanning

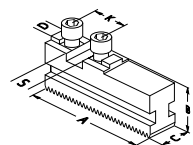
TYPE	SPANBEREIK	GRONDKLAUW POSITIE	B	C	D	K	S	B	T	KG/SET
LY10	27 - 73	1	49	30	8	32	18	20	M6	1.3
	40 - 91	2								
LY14	84 - 137	1								1.1
	102 - 155	2								
LY17	127 - 180	1								1.4
	145 - 198	2								



omkeerbaar

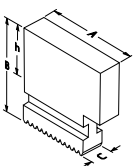
TYPE	A	B	C	D	K	S	T	BOUW	KG/SET
GX16	63	36.5	20	8	32	18	7.5	M8	0.6

Grondklauwen



TYPE	A	B	C	D	K	S	BOUW	KG/SET
GBK160	65	27.5	20	8	32	18	M8	0.7

Zachte monoblok klauwen



TYPE	A	B	C	h	KG/SET
UVB160	69	60	20	39	1.3