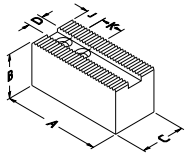
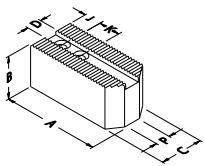


Zachte klauwen (vertand 1.5mm x 60°)



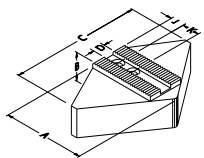
recht

TYPE	A	B	C	D	K+J BOUT	P	KG/SET	MATERIAAL
BO06	72	35	30	12	20+15 M10		1.3	staal
AA06	72	38	32	12	20+15 M10		0.7	aluminium
BQ06	72	30	30	12	20+15 M10		1.1	staal
BB06	72	40	30	12	20+15 M10		1.5	staal
BC06	72	50	30	12	20+15 M10		1.8	staal
DJ06	72	60	30	12	20+15 M10		2.2	staal
AB06	72	76	32	12	20+15 M10		1.4	aluminium



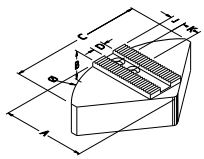
aangeschuind

TYPE	A	B	C	D	K+J BOUT	P	KG/SET	MATERIAAL
BA06	72	30	30	12	20+15 M10	5	1.0	staal
PT06	82	30	30	12	20+15 M10	5	1.3	staal



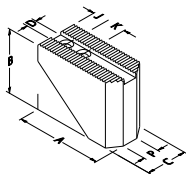
segment omkeerbaar

TYPE	A	B	C	D	K+J BOUT	P	KG/SET	MATERIAAL
CN16	60	60	120	12	20+15 M10		9.0	staal
HN16	64	64	120	12	20+15 M10		3.2	aluminium
HN17	64	100	120	12	20+15 M10		5.0	aluminium



segment

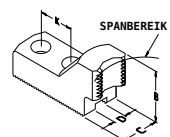
TYPE	A	B	C	D	K+J BOUT	P	KG/SET	MATERIAAL
SG06	76	76	Ø169	12	20+20 M10		13.0	staal
AG06	76	76	Ø169	12	20+20 M10		6.0	aluminium



aangeschuind en aflopend

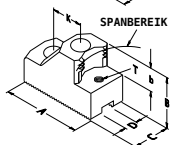
TYPE	A	B	C	D	K+J BOUT	P	KG/SET	MATERIAAL
BD06	72	60	30	12	20+15 M10	5	1.8	staal

Harde klauwen (vertand 1.5mm x 60°)



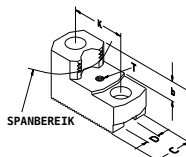
grijpklauwen - buitenspanning

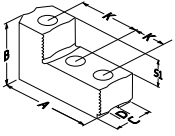
TYPE	SPANBEREIK	B	C	D	K	b	T
KK16	18 - 34	39	35	12	20		
LA03	32 - 50	49	35	12	20	20	M6
LA04	50 - 68						
LA06	65 - 82						
LA07	79 - 97						
LA09	96 - 113						



grijpklauwen - binnenspanning

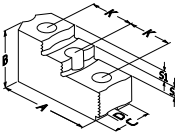
TYPE	SPANBEREIK	B	C	D	K	b	T
MA05	53 - 70	49	35	12	20	20	M6
MA06	64 - 83						
MA07	83 - 104						
MA09	104 - 123						





omkeerbare klauwen type B

TYPE	A	B	C	D	K	S1	S2
GT06	66	38	35	12	20	14	



omkeerbare klauwen type A

TYPE	A	B	C	D	K	S1	S2
GT07	68	50	35			11	11