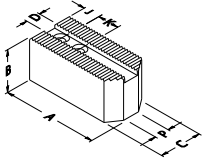


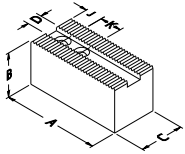
# SAMCHULLY HS-05

## Zachte klauwen (vertand 1.5mm x 60°)



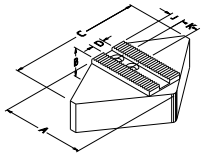
### aangeschuind

TYPE	A	B	C	D	K+J BOUT	P	KG/SET	MATERIAAL
BR04	45	25	25	10	14+13 M8	4	0.3	staal
BB04	45	40	25	10	14+13 M8	4	0.5	staal
BR05	55	25	25	10	14+13 M8	4	0.6	staal
BB05	55	40	25	10	14+13 M8	4	1.0	staal



### recht

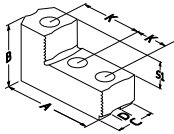
TYPE	A	B	C	D	K+J BOUT	P	KG/SET	MATERIAAL
DK05	55	50	25	10	14+13 M8		1.1	staal
BH05	55	60	25	10	14+13 M8		1.4	staal



### segment omkeerbaar

TYPE	A	B	C	D	K+J BOUT	P	KG/SET	MATERIAAL
HN12	50	50	100	10	14+13 M8		3.5	aluminium

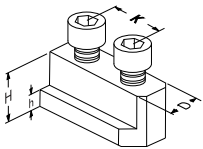
## Harde klauwen (vertand 1.5mm x 60°)



### omkeerbare klauwen type B

TYPE	A	B	C	D	K	S1	S2
GT04	53	30	25	10	14	10	

## T-moeren



### dubbel

TYPE	D	h	H	K	BOUT
GP03	10	15	5.5	14	M8 x 20