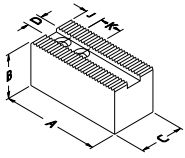
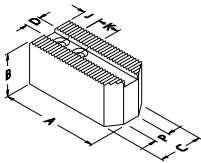


Zachte klauwen (vertand 1.5mm x 60°)



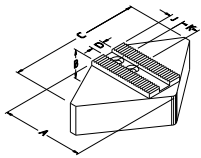
recht

TYPE	A	B	C	D	K+J BOUT	P	KG/SET	MATERIAAL
BR13	130	50	50	21	30+40 M16		6.5	staal
AA13	130	51	51	21	30+40M16		2.5	aluminium
DJ13	130	80	50	21	30+40M16		10.4	staal
BD13	130	100	50	21	30+40 M16		13.0	staal
AB13	130	76	51	21	30+40 M16		4.0	aluminium
AC13	130	102	51	21	30+40 M16		5.2	aluminium



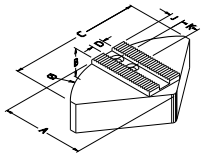
aangescuind

TYPE	A	B	C	D	K+J BOUT	P	KG/SET	MATERIAAL
PT13	145	50	50	21	30+40 M16	10	7.3	staal



segment omkeerbaar

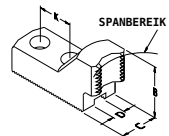
TYPE	A	B	C	D	K+J BOUT	P	KG/SET	MATERIAAL
CN33	132	76	240	21	30+30 M16		28.0	staal
HN33	132	76	240	21	30+30 M16		10.0	aluminium
HN34	132	100	240	21	30+30 M16		13.2	aluminium



segment

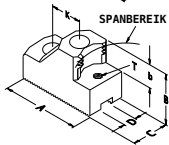
TYPE	A	B	C	D	K+J BOUT	P	KG/SET	MATERIAAL
SG13	147	76	Ø304	21	30+34 M16		41.0	staal
AG13	147	76	Ø304	21	30+34 M16		15.0	aluminium

Harde klauwen (vertand 1.5mm x 60°)



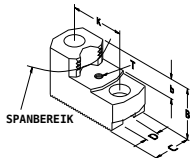
grijpklauwen - buitenspanning

TYPE	SPANBEREIK	B	C	D	K	b	T
KK33	43 - 98	49	50	21	30		
LE05	66 - 122	59	50	21	30	25	M8
LE10	121 - 184						
LE16	184 - 251						
LE23	251 - 310						



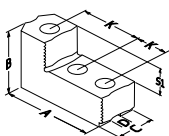
grijpklauwen - binnenspanning

TYPE	SPANBEREIK	B	C	D	K	b	T
ME08	97 - 160	59	50	21	30	25	M8
ME14	160 - 219						
ME20	219 - 281						
ME26	281 - 340						



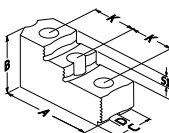
omkeerbare klauwen type B

TYPE	A	B	C	D	K	S1	S2
GT13	98	60	50	21	30	22	

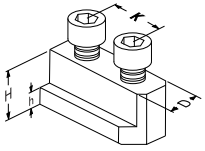


omkeerbare klauwen type A

TYPE	A	B	C	D	K	S1	S2
GT14	103	70	50			17	17



T-moeren



dubbel

TYPE	D	h	H	K	BOUT
GP13	21	28	11.5	30	M16 x 35